

SUPPLEMENTARY DATA

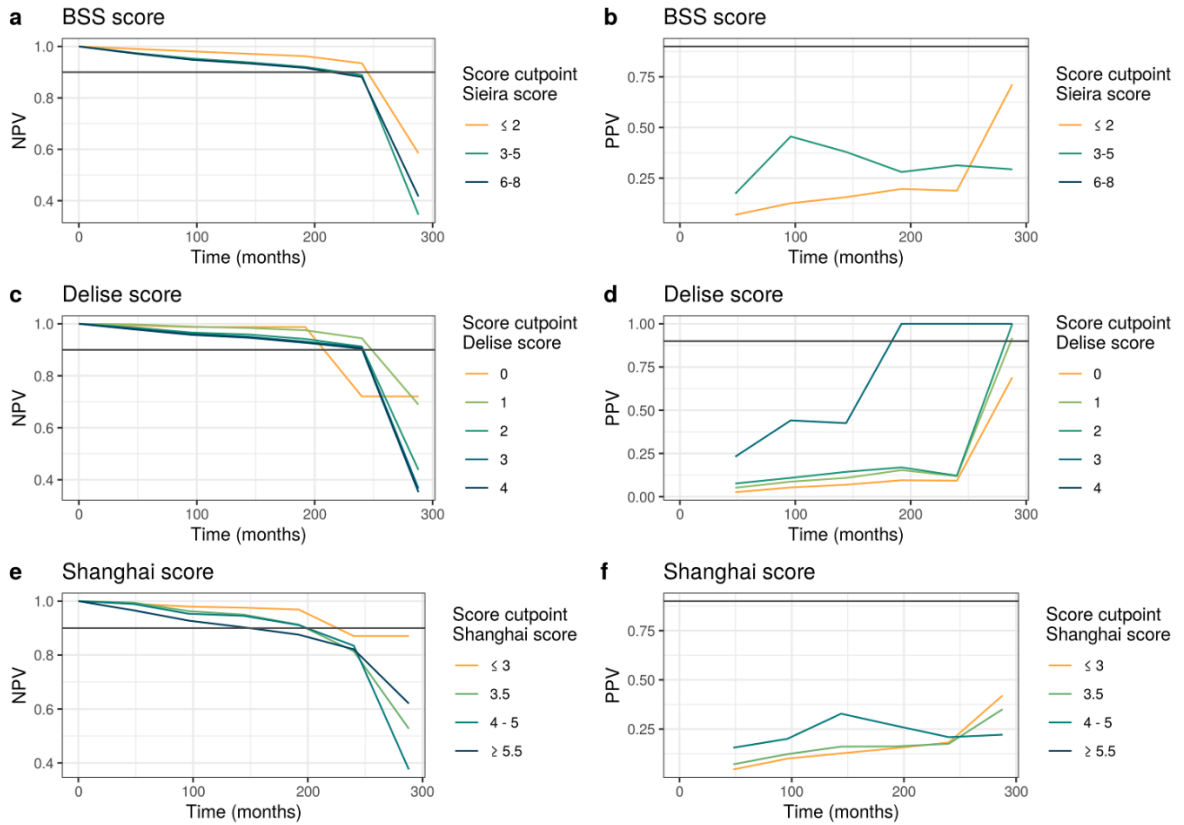
Table 1 of the supplementary data

Mean positive predictive value and negative predictive value for each score cutpoint, taking into account competing risks.

Score	cutpoint	mean PPV	mean NPV
Delise score ¹	0	0.17	0.91
	1	0.24	0.94
	2	0.27	0.89
	3	0.68	0.87
	4	--	0.87
Shanghai score ranks ²	≤ 3	0.17	0.95
	3.5	0.17	0.88
	4-5	0.23	0.86
	≥ 5.5	--	0.87
Sieira score ranks ³	≤ 2	0.24	0.92
	3-5	0.32	0.86
	6-8	--	0.87

NPV, negative predictive value; PPV, positive predictive value.

Figure 1 of the supplementary data. Negative predictive value of the scores over time using the cohort data



BSS, Brugada syndrome score. NPV, negative predictive value; PPV, positive predictive value.

REFERENCES

1. Delise P, Allocca G, Marras E et al. Risk stratification in individuals with the Brugada type 1 ECG pattern without previous cardiac arrest: usefulness of a combined clinical and electrophysiologic approach. *Eur Heart J.* 2011;32:169-76.
2. Kawada S, Morita H, Antzelevitch C et al. Shanghai Score System for Diagnosis of Brugada Syndrome: Validation of the Score System and System and Reclassification of the Patients. *J Am Coll Cardiol ClinC Electrophysiol.* 2018;4:724-30
3. Sieira J, Conte G, Ciconte G et al. A score model to predict risk of events in patients with Brugada Syndrome. *Eur Heart J.* 2017;38:1756-63.