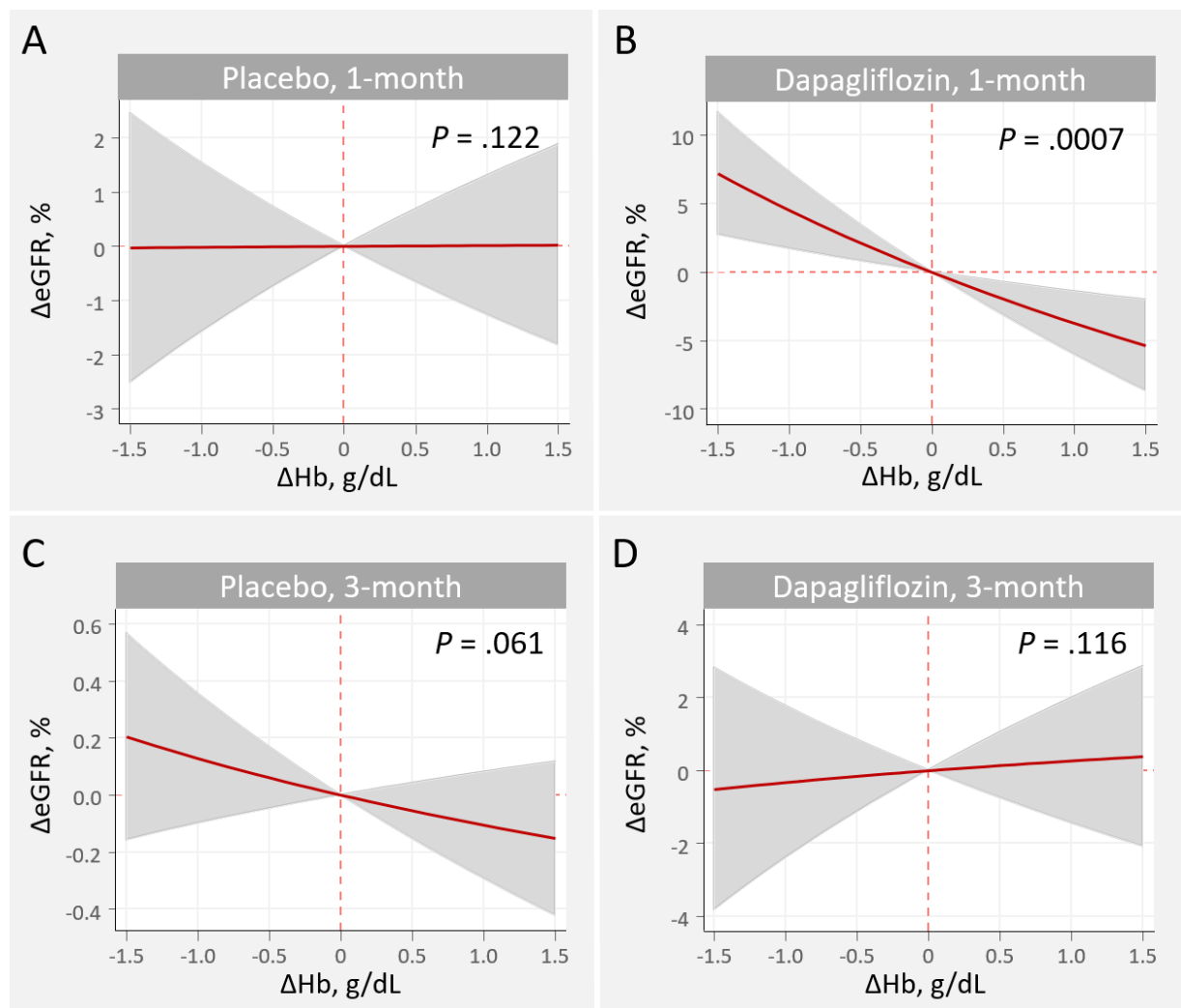


SUPPLEMENTARY DATA

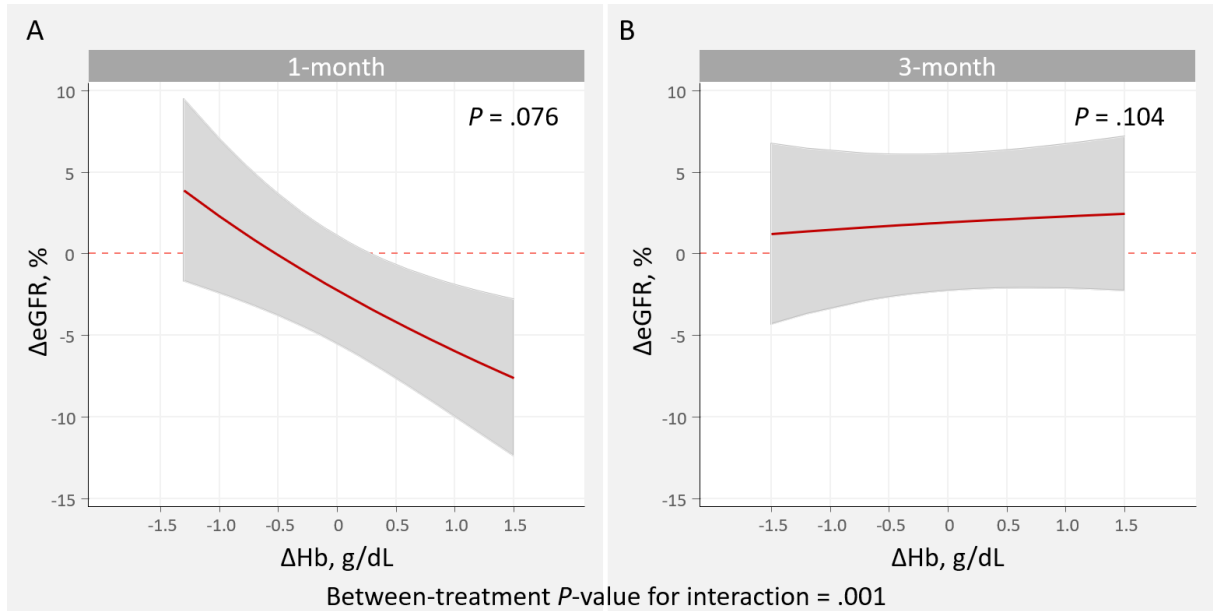
DAPA-VO<sub>2</sub> investigators

Patricia Palau, Martina Amiguet, Eloy Domínguez, Clara Sastre, Anna Mollar, Julia Seller, José Manuel García Pinilla, Ainhoa Larumbe, Alfonso Valle, Juan José Gómez Doblás, Rafael de la Espriella, Gema Miñana, Ainhoa Robles Mezcuca, Enrique Santas, Vicent Bodí, Juan Sanchis, Domingo Pascual-Figal, José Luis Górriz, Antonio Baýes-Genís, José Civera, Adriana Conesa, Rim Zakarne, Clara Jiménez Rubio, Alejandro I. Pérez Cabeza, Arancha Díaz Expósito, José David Martínez Carmona, Manuel Luna Morales, Francisco J. Zafra Sánchez, Ángel Montiel Trujillo, Herminio Morillas Climent, and Julio Núñez.

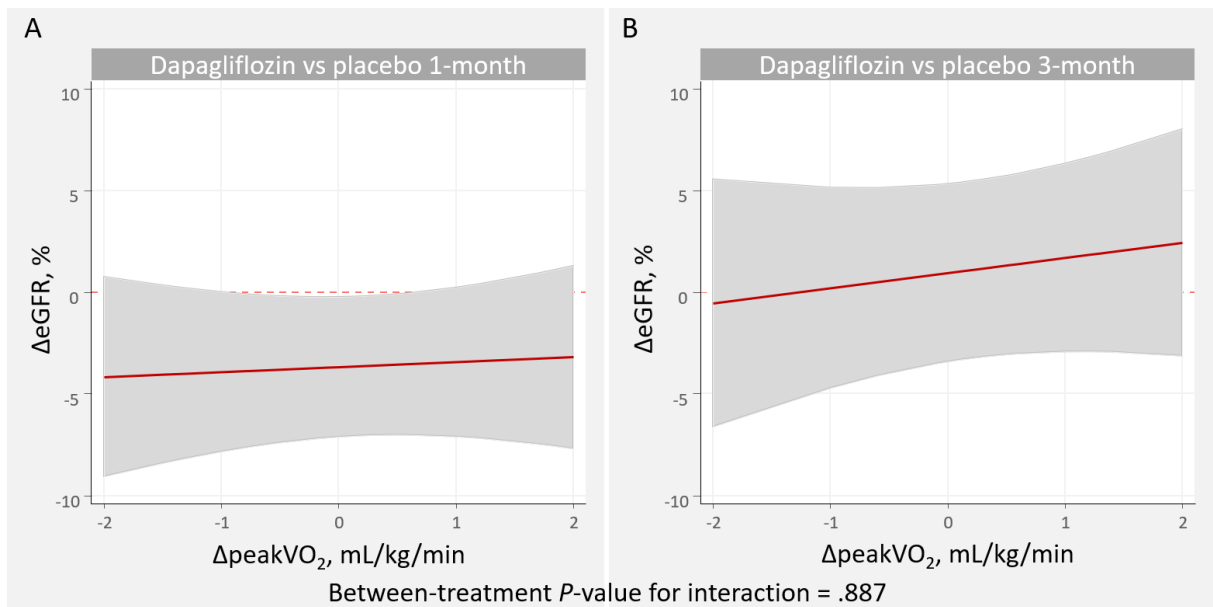
**Figure 1 of the supplementary data.** Relationship between changes in hemoglobin ( $\Delta$ Hb) and percent changes in estimated glomerular filtration rate ( $\Delta$ eGFR) at 1 and 3 months.



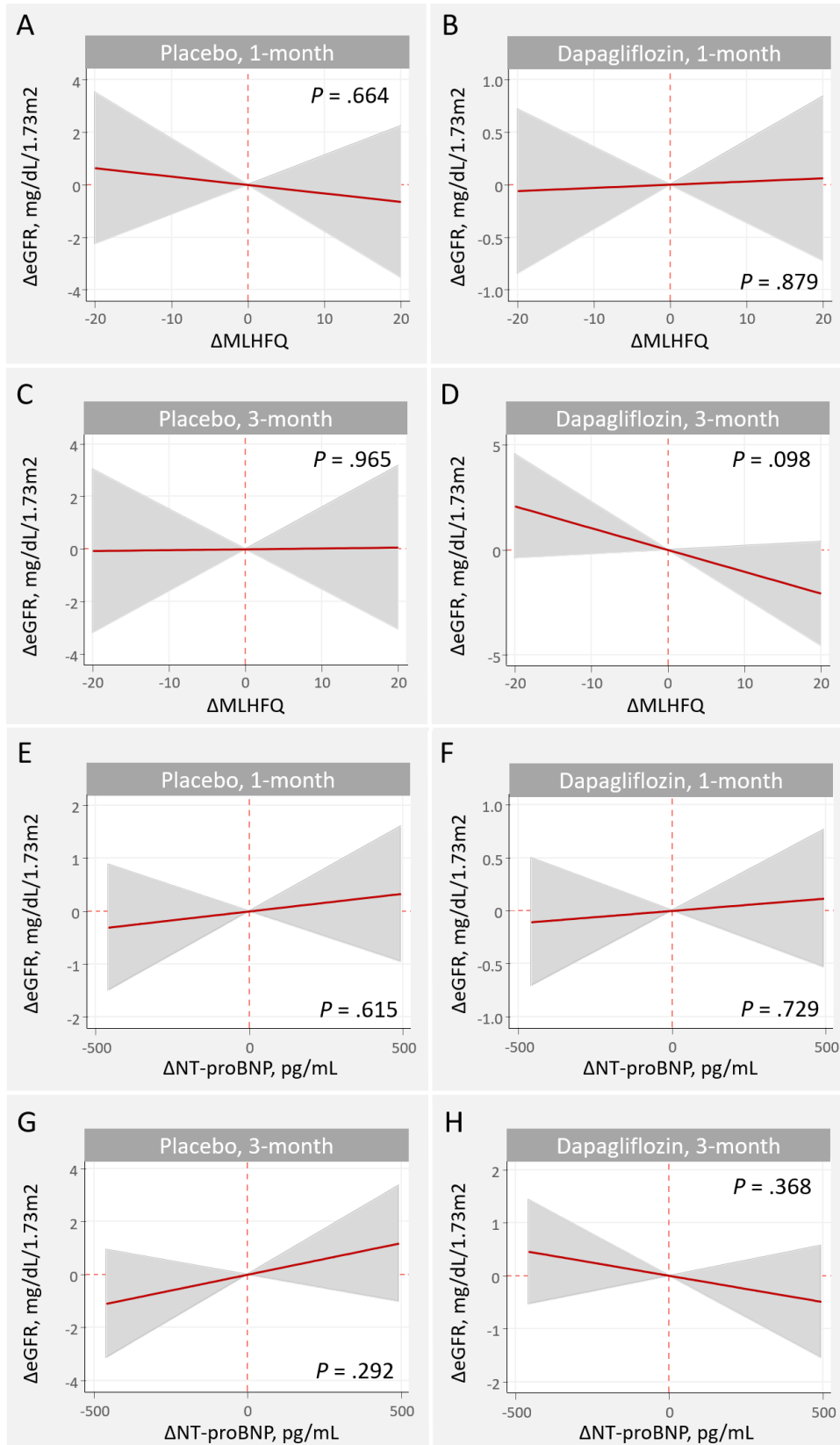
**Figure 2 of the supplementary data.** Relationship between changes in hemoglobin ( $\Delta\text{Hb}$ ) and percent changes in estimated glomerular filtration rate ( $\Delta\text{eGFR}$ ) at 1 and 3 months. Between-treatment comparison.



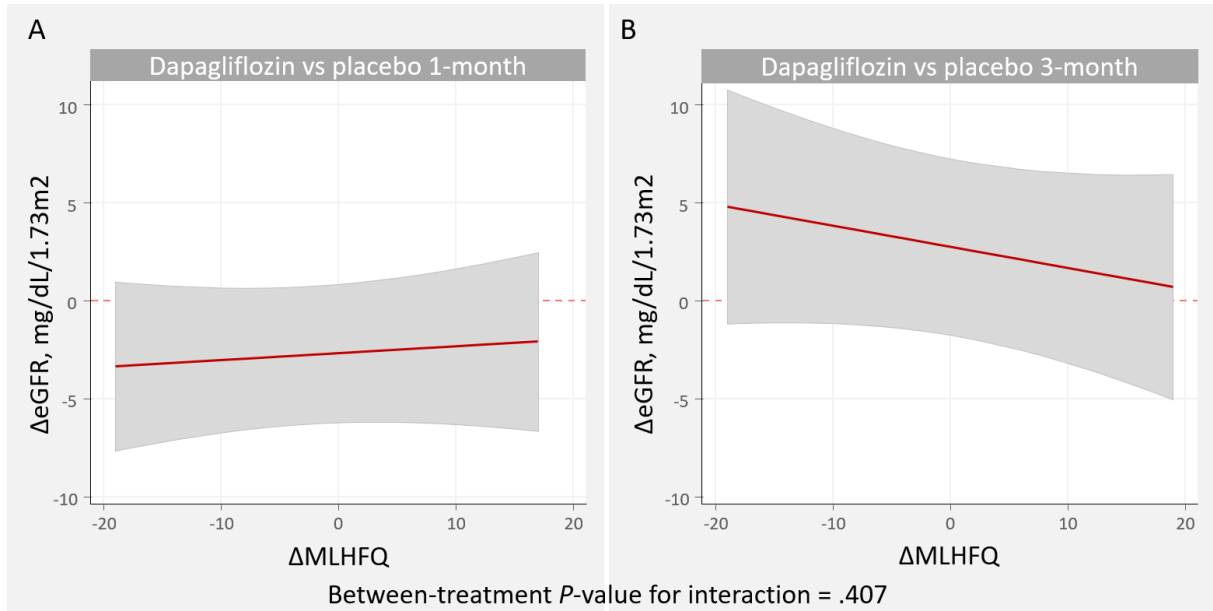
**Figure 3 of the supplementary data.** Relationship between changes in peak oxygen consumption ( $\Delta\text{peakVO}_2$ ) and changes in estimated glomerular filtration rate ( $\Delta\text{eGFR}$ ) at 1 and 3 months. Between-treatment comparison.



**Figure 4 of the supplementary data.** Relationship between changes in Minnesota Living with Heart Failure Questionnaire ( $\Delta$ MLHFQ) and NT-proBNP (amino-terminal pro-brain natriuretic peptide) and changes in estimated glomerular filtration rate ( $\Delta$ eGFR) at 1 and 3 months.



**Figure 5 of the supplementary data.** Relationship between changes in Minnesota Living with Heart Failure Questionnaire ( $\Delta$ MLHFQ) and changes in estimated glomerular filtration rate ( $\Delta$ eGFR) at 1 and 3 months. Between-treatment comparison.



**Figure 6 of the supplementary data.** Relationship between changes in amino-terminal pro-brain natriuretic peptide ( $\Delta$ NT-proBNP) and changes in estimated glomerular filtration rate ( $\Delta$ eGFR) at 1 and 3 months. Between-treatment comparison.

