

**SUPPLEMENTARY DATA**

**Table 1 of the supplementary data.** Clinical characteristics according to treatment after excluding

Variables	SGLT2i	GLP1ra	Both	P
No.	10 444	946	2266	
Age	69 [61-77]	66 [57-74]	64 [56-72]	< .001
Sex (male)	6264/60.0	441/46.6	1282/56.6	< .001
HBP	7287/69.8	698/73.8	1688/74.5	< .001
Obesity/overweight	4533/43.4	946/100	2266/100	< .001
DLP	6273/60.1	502/53.1	1413/62.4	< .001
DM	10 444/100	946/100	2266/100	< .001
CAD	1475/14.1	114/12.1	344/15.2	.067
HF	654/6.3	63/6.7	144/6.4	.885
AF	1065/10.2	69/7.3	198/8.7	.003
Stroke	550/5.3	64/6.8	119/5.3	.142
PAD	503/4.8	66/7.0	139/6.1	.001

patients without diabetes and those who died of noncancer causes

GLP1ra, glucagon-like peptide 1 receptor agonists; SGLT2i, sodium-glucose cotransporter 2 inhibitors; HBP, high blood pressure; DM, diabetes mellitus; DLP, dyslipidemia; HF, heart failure; AF, atrial fibrillation; CAD, coronary artery disease; PAD, peripheral artery disease.

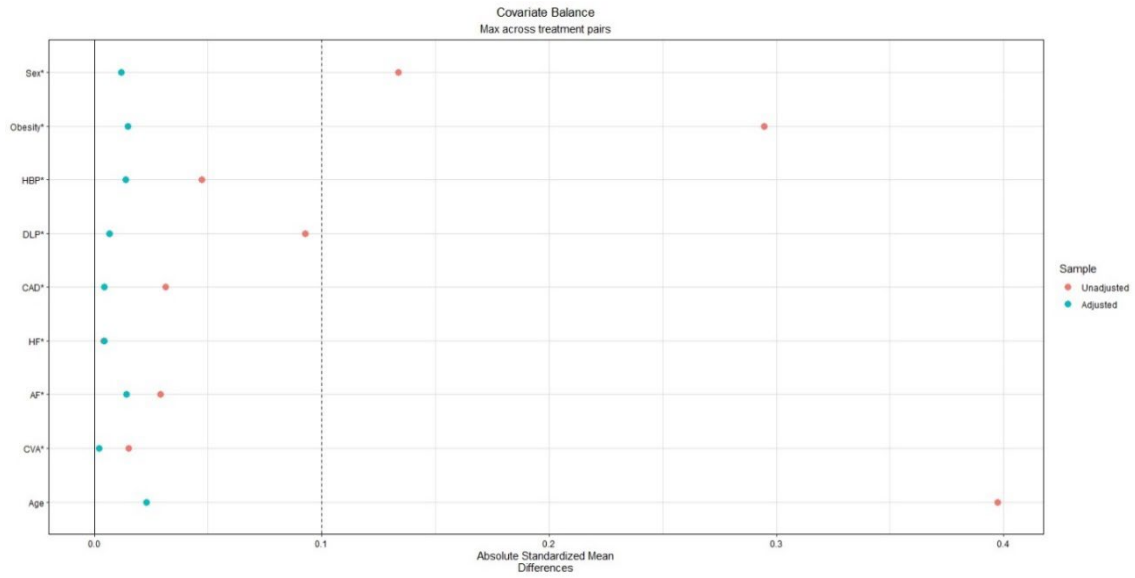
The data are expressed as No./% or median [interquartile range].

**Table 2 of the supplementary data.** Multivariate Cox regression analysis. Hospitalization or Cancer mortality

Variable	Hospitalization for cancer				Cancer mortality			
	HR	Lower CI	Upper CI	P	HR	Lower CI	Upper CI	P
Both vs SGLT2i	0.82	0.59	1.15	.25	0.21	0.10	0.43	0.01
Both vs GLP1ra	0.68	0.42	1.09	.11	0.18	0.07	0.49	< .001
Treatment duration	0.99	0.99	1.00	.23	0.96	0.95	0.98	< .001
Sex (male)	1.40	0.95	2.06	.09	2.59	1.33	5.03	.01
Obesity	1.29	0.91	1.83	.15	1.48	0.76	2.87	.25
HBP	1.28	0.82	1.99	.27	1.27	0.54	3.00	.58
DLP	0.87	0.62	1.23	.44	0.69	0.38	1.27	.23
DM	1.34	0.84	2.16	.22	1.88	0.79	4.45	.15
CAD	0.79	0.43	1.45	.45	0.55	0.19	1.58	.27
HF	1.24	0.69	2.23	.46	1.34	0.43	4.15	.61
AF	1.21	0.65	2.25	.55	1.41	0.48	4.14	.53
Stroke	1.03	1.01	1.05	.00	1.06	1.03	1.09	< .001
Age	1.22	0.87	1.70	.25	4.71	2.29	9.69	< .001

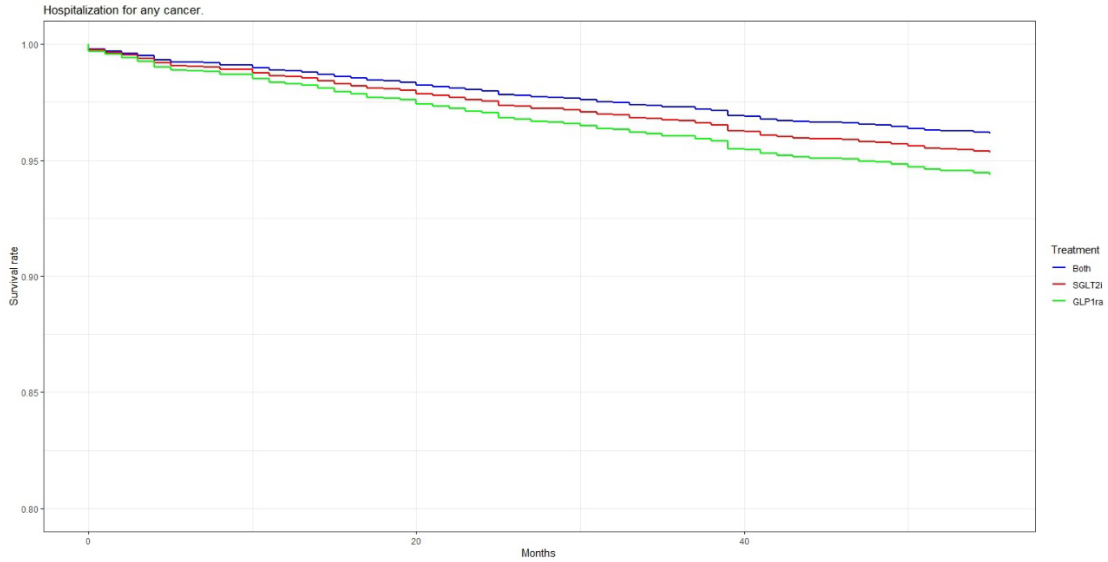
CVD, cardiovascular disease; GLP1ra, glucagon-like peptide 1 receptor agonists; SGLT2i, sodium-glucose cotransporter 2 inhibitors; HR, hazard ratio; CI, confidence interval; HBP, high blood pressure; DM, diabetes mellitus; DLP, dyslipidemia; HF, heart failure; AF, atrial fibrillation; CAD, coronary artery disease; PAD, peripheral artery disease.

Figure1 of the supplementary data. Love plot displays standardized mean differences for all the covariates in the population before (unadjusted) and after adjustment by multinomial propensity score.



**Figure 2 of the supplementary data.** Cox regression survival curve of SGLT2i, GLP1ra, and combined therapy groups for hospitalization for cancer (A) and cancer mortality (B)

**A**



**B**

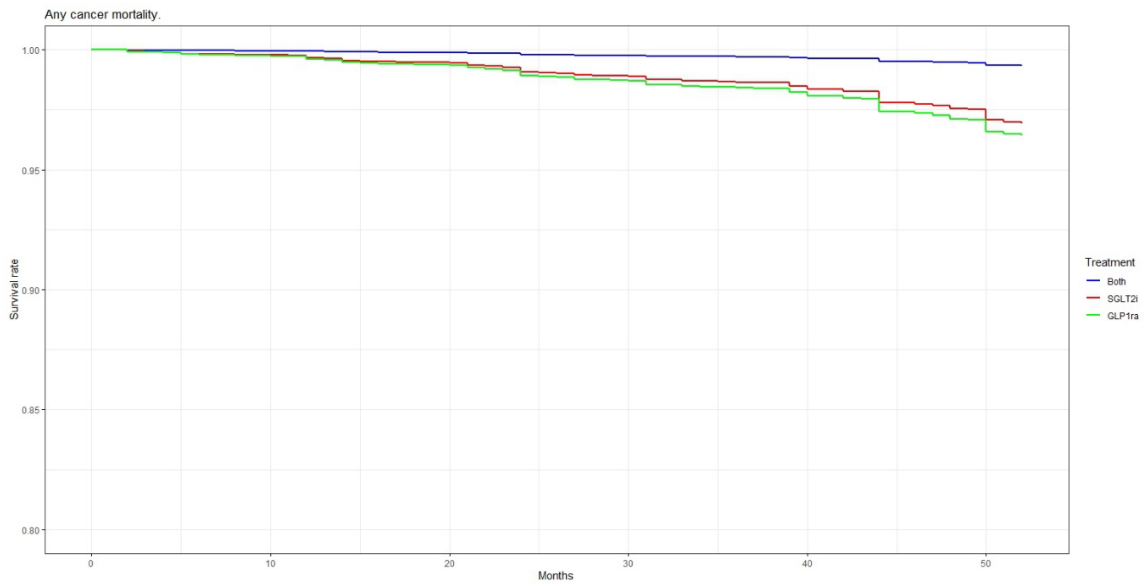
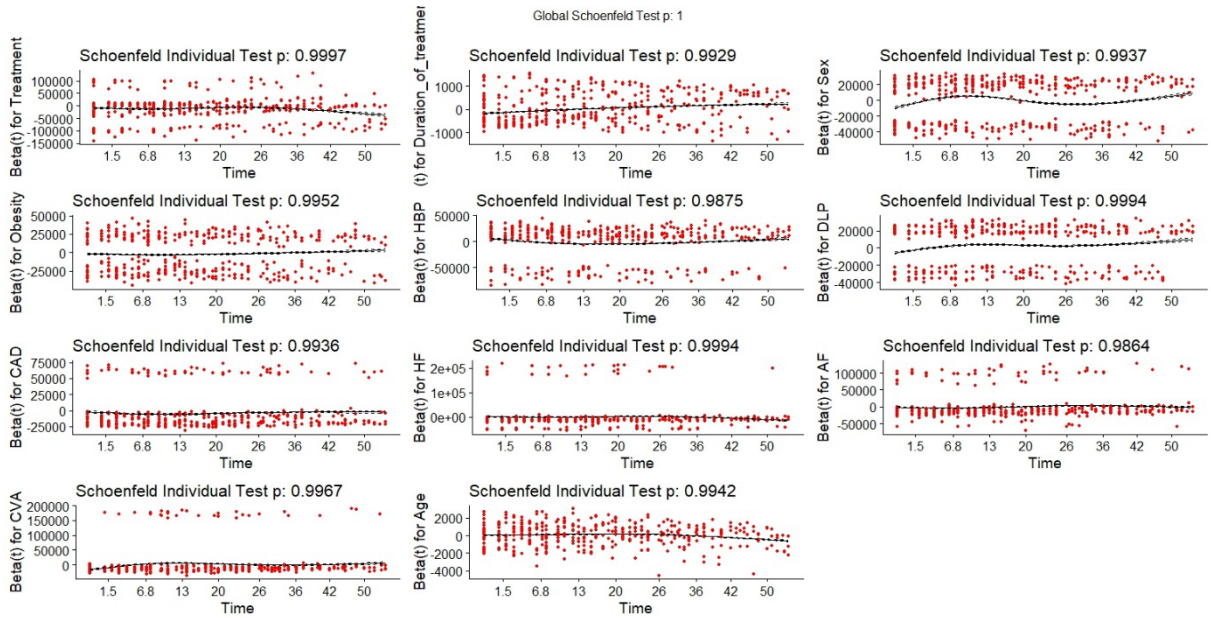


Figure 3 of the supplementary data. Proportional hazard assumptions graphs for hospitalization for

cancer (A) and cancer mortality (B)

A



B

