

**SUPPLEMENTARY DATA**

**Table 1 of the supplementary data**

Characteristics of the Initial Cohort Study Population According to Age Category (N = 130 219)

	ALL	60-84 y	≥ 85 y	
	N = 130 219	n = 122 443	n = 7776	<i>P</i> overall
<i>Age, y</i>	70.0 [64.0;76.0]	69.0 [64.0;75.0]	87.0 [86.0;89.0]	.000
<i>Sex, female</i>	73 029 (56.1)	67 682 (55.3)	5347 (68.8)	< .001
<i>eGFR, mL/min</i>	82.4 [69.3;90.9]	83.4 [70.8;91.3]	61.6 [48.3;75.0]	.000
<i>eGFR categories</i>				.000
≥ 60 mL/min	11 2625 (86.5)	10 8512 (88.6)	4113 (52.9)	
45-59 mL/min	12 262 (9.42)	10 112 (8.26)	2150 (27.6)	
30-44 mL/min	4435 (3.41)	3193 (2.61)	1242 (16.0)	
15-29 mL/min	897 (0.69)	626 (0.51)	271 (3.49)	
<i>Smoking</i>				< .001
Never smoker	84 699 (65.0)	78 495 (64.1)	6204 (79.8)	
Active smoker	12 319 (9.46)	12 132 (9.91)	187 (2.40)	
Former smoker	33 201 (25.5)	31 816 (26.0)	1385 (17.8)	
<i>Hypercholesterolemia</i>	10 0657 (77.3)	95 768 (78.2)	4889 (62.9)	< .001
<i>Diabetes mellitus</i>	31 882 (24.5)	29 933 (24.4)	1949 (25.1)	.224
<i>Hypertension</i>	80 338 (61.7)	74 451 (60.8)	5887 (75.7)	< .001
<i>Atrial fibrillation</i>	7543 (5.79)	6458 (5.27)	1085 (14.0)	< .001
<i>CHD</i>	11 273 (8.66)	10 230 (8.35)	1043 (13.4)	< .001
<i>Stroke</i>	8798 (6.76)	7722 (6.31)	1076 (13.8)	< .001
<i>PAD</i>	3102 (2.38)	2855 (2.33)	247 (3.18)	< .001

<i>Heart failure</i>	5166 (3.97)	4228 (3.45)	938 (12.1)	< .001
<i>Statins</i>	58 418 (44.9)	55 709 (45.5)	2709 (34.8)	< .001
<i>RASD</i>	65 862 (50.6)	61 124 (49.9)	4738 (60.9)	< .001

CHD, coronary heart disease; eGFR, estimated glomerular filtration rate; PAD, peripheral artery disease; RASD, renin-angiotensin system drugs.

Data are expressed as No. (%), mean  $\pm$  standard deviation or median [interquartile range].

**Table 2 of the supplementary data**

Multivariate adjusted subdistribution hazard ratio of admission (95% confidence interval) due to coronary heart disease, cardiovascular disease and hazard ratio of all-cause mortality in individuals with moderately decreased glomerular filtration rate (eGFR = 30-59 mL/min/1.73 m<sup>2</sup>), DM or established cardiovascular disease (CHD, stroke, transient ischemic attack) and combinations, compared with individuals without these diseases, considering death as a competing risk for CHD and any CVD.

	CHD*	Any CVD**	ACM***
eGFR 30-59	1.29 (0.96 - 1.71)	1.30 (1.11 - 1.52)	1.42 (1.27 - 1.58)
DM	1.56 (1.32 - 1.84)	1.58 (1.42 - 1.75)	1.50 (1.38 - 1.64)
eGFR 30-59 plus DM	1.27 (0.81 - 1.98)	1.89 (1.55 - 2.31)	2.24 (1.95 - 2.56)
CVD	2.85 (2.41 - 3.39)	2.71 (2.42 - 3.04)	1.58 (1.43 - 1.75)
CVD plus eGFR 30-59	3.04 (2.20 - 4.19)	3.13 (2.63 - 3.74)	2.06 (1.78 - 2.38)
CVD plus DM	4.79 (4.01 - 5.73)	4.27 (3.79 - 4.81)	2.42 (2.17 - 2.71)
CVD plus eGFR 30-59 plus DM	4.38 (3.13 - 6.12)	4.93 (4.14 - 5.86)	3.28 (2.83 - 3.80)

ACM, all-cause mortality; CHD, coronary heart disease; CVD, cardiovascular disease; DM, diabetes mellitus; eGFR, estimated glomerular filtration rate.

\*Adjusted for age, sex, smoking status, hypercholesterolemia, heart failure, and use of statins and renin-angiotensin system drugs.

\*\*Adjusted for age, sex, smoking status, hypercholesterolemia, hypertension, atrial fibrillation, heart failure, and use of statins and renin-angiotensin system drugs.

\*\*\*Adjusted for age, sex, smoking status, hypertension, atrial fibrillation, heart failure, and statin use.

**Table 3 of the supplementary data**

Multivariate adjusted subdistribution hazard ratio of admission (95% confidence interval) due to coronary heart disease, cardiovascular events and hazard ratio of all-cause mortality in individuals  $\geq 85$  years ( $n = 7776$ ) with moderately decreased glomerular filtration rate (eGFR = 30-59 mL/min/1.73m<sup>2</sup>), DM or CHD, and combinations, compared with individuals without these diseases, considering death as a competing risk for CHD and any CVE.

	CHD*	CVD**	ACM***
eGFR 30-59	1.90 (1.01 - 3.56)	1.50 (1.10 - 2.05)	1.08 (0.94 - 1.25)
DM	2.21 (1.03 - 4.76)	1.47 (0.97 - 2.21)	1.32 (1.09 - 1.60)
eGFR 30-59 plus DM	1.82 (0.75 - 4.46)	1.60 (1.04 - 2.45)	1.55 (1.28 - 1.88)
CHD	4.08 (1.84 - 9.00)	2.11 (1.31 - 3.39)	1.49 (1.16 - 1.90)
CHD plus eGFR 30-59	5.20 (2.49 - 10.8)	2.52 (1.64 - 3.88)	1.56 (1.24 - 1.95)
CHD plus DM	6.83 (2.83 - 16.5)	2.61 (1.42 - 4.79)	1.90 (1.35 - 2.65)
CHD plus eGFR 30-59 plus DM	8.72 (3.90 - 19.5)	3.08 (1.80 - 5.27)	1.90 (1.40 - 2.56)

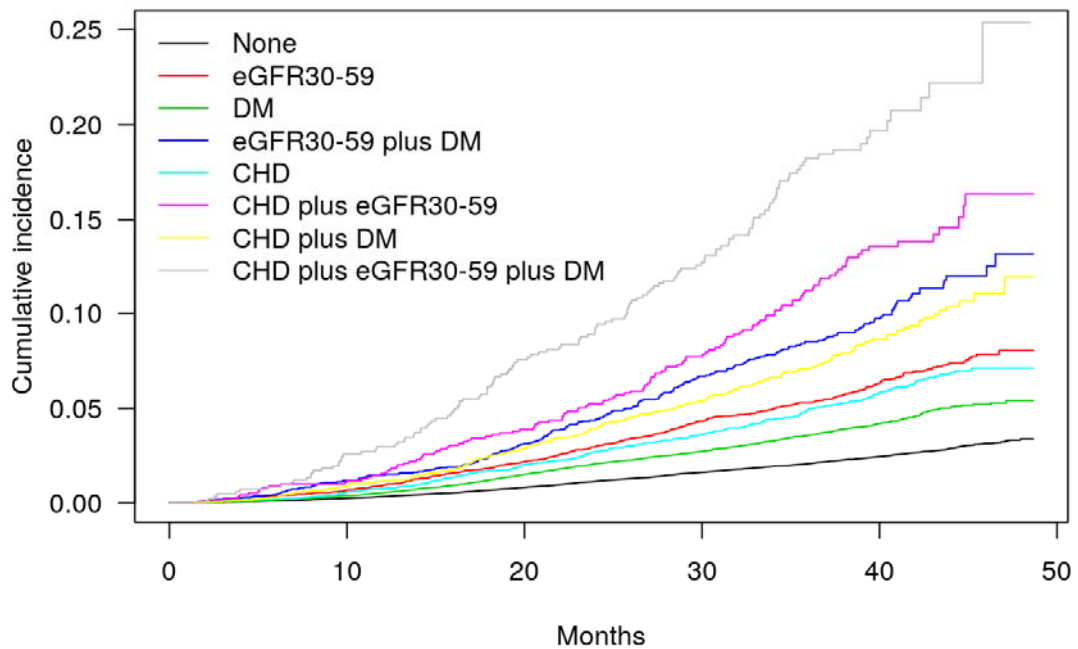
ACM, all-cause mortality; CHD, coronary heart disease; CVD, cardiovascular disease; DM, diabetes mellitus; eGFR, estimated glomerular filtration rate.

\*Adjusted for age, sex, smoking status, hypercholesterolemia, heart failure, use of statins and renin-angiotensin system drugs.

\*\*Adjusted for age, sex, smoking status, hypercholesterolemia, hypertension, atrial fibrillation, heart failure, use of statins and renin-angiotensin system drugs.

\*\*\*Adjusted for age, sex, smoking status, hypertension, atrial fibrillation, heart failure and statins.

**Figure 1 of the supplementary data.** Kaplan-Meier cumulative incidence of all-cause mortality in individuals < 85 years with decreased glomerular filtration rate (eGFR = 30-59 mL/min/1.73 m<sup>2</sup>), coronary heart disease and diabetes mellitus, and combinations, compared with individuals without these diseases, considering death as a competing risk for CHD and any CVE



For the typesetter

Poner espacio después de "eGFR"

CHD, coronary heart disease; CVD, cardiovascular disease; DM, diabetes mellitus; eGFR, estimated glomerular filtration rate.