

Figure 1 of the supplementary data: Calibration belt for the binary logistic regression model for the assessment of variables associated with in-hospital mortality.

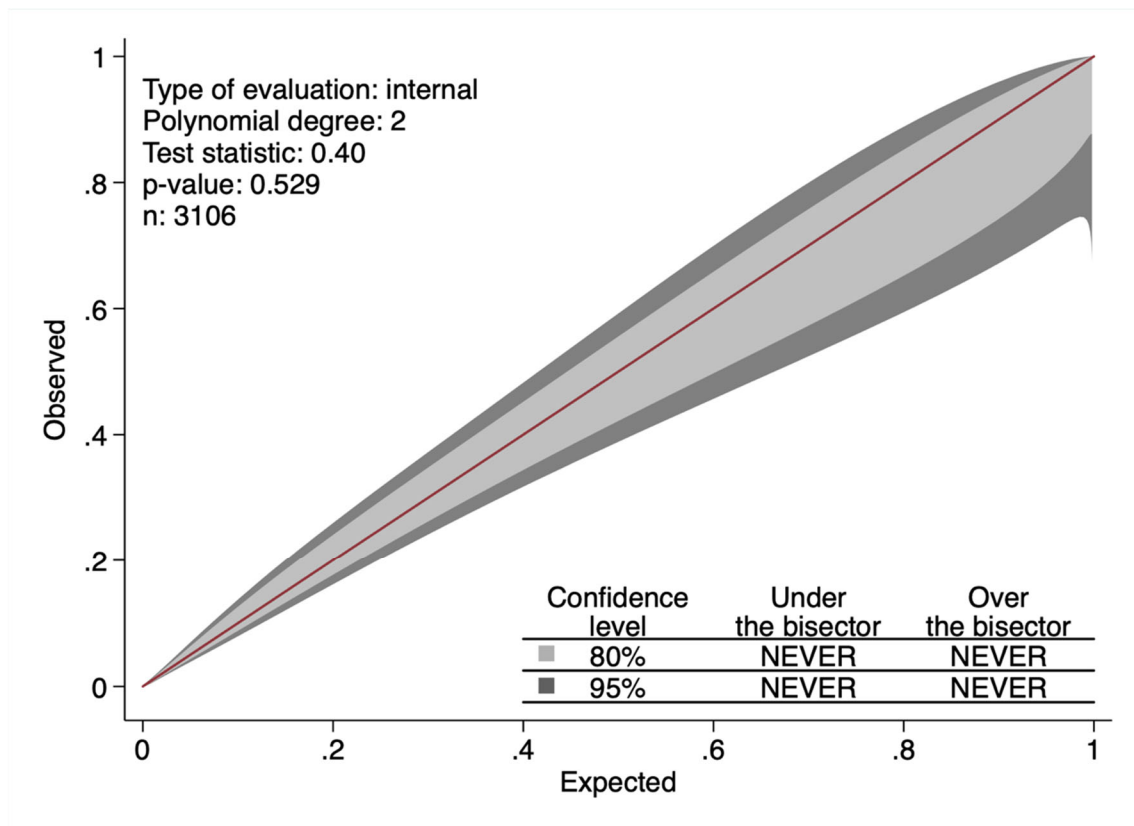


Figure 2 of the supplementary data: Kaplan-Myer curves for all-cause mortality (A) and cardiovascular mortality (B) according to the FIB-4 index categories. Adjusted risk for all-cause mortality (C) and cardiovascular mortality (D) associated with the FIB-4 index.

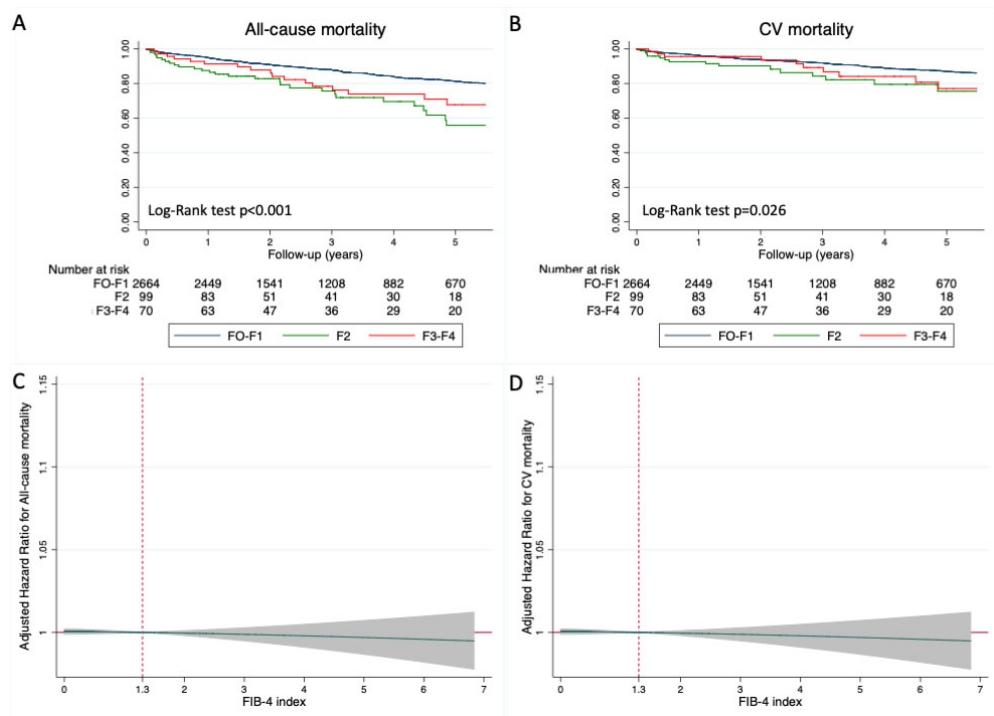


Figure 3 of the supplementary data: Mean levels of alanine transaminase (ALT) and aspartate transaminase (AST) before, during and after admission for acute coronary syndrome.

