

**SUPPLEMENTARY DATA**

**Table 1 of the supplementary data**

KAMIR-NIH participating sites and investigators

	Institution	Principle investigators
1	Chonnam National University Hospital	Myung Ho Jeong
2	Gachon University Gil Medical Center	Tae Hoon Ahn
3	Seoul St. Mary's Hospital	Ki Bae Seung
4	Korea University Guro Hospital	Seung-Woon Rha
5	Seoul National University Hospital	Hyo-Soo Kim
6	Seoul National University Bundang Hospital	Chang-Hwan Yoon
7	Samsung Medical Center	Hyeon-Cheol Gwon
8	Gangdong Kyunghee University Hospital	Chong-Jin Kim
9	Wonju Severance Christian Hospital	Junghan Yoon
10	Chungnam National University Hospital	In-Whan Seong
11	Chungbuk National University Hospital	Kyung-Kuk Hwang
12	Chonbuk National University Hospital	Jei Keon Chae
13	Wonkwang University Hospital	Seok Kyu Oh
14	Yeungnam University Medical Center	Jung-Hee Lee
15	Kyungpook National University Hospital	Shung Chull Chae
16	Keimyung University Dongsan Medical Center	Seung-Ho Hur
17	Pusan Natinoal University Hospital	Kwang Soo Cha
18	Gyeongsang National University Hospital	Jin-Yong Hwang

19	Inje University Haeundae Paik Hospital	Doo-Il Kim
20	Jeju National University Hospital	Seung-Jae Joo

**Table 2 of the supplementary data**

KAMIR-V participating sites and investigators

	Institution	Principle investigators
1	Chonnam National University Hospital	Myung Ho Jeong
2	Seoul St. Mary's Hospital	KiYuk Chang
3	Bucheon St. Mary's Hospital	Hee-Yeol Kim
4	St. Vincent Hospital	Ki-Dong Yoo
5	Gangneung Asan Hospital	Sang-Yong Yoo
6	Kyungpook National University Hospital	Shung Chull Chae
7	Gyeongsang National University Hospital	Jin-Yong Hwang
8	Kyunghee University Hospital	Weon Kim
9	Keimyung University Dongsan Medical Center	Seung Ho Hur
10	Korea University Guro Hospital	Seung-Woon Rha
11	Dongguk University Gyeongju Hospital	Deuk-Young Nah
12	Gangdong Kyunghee University Hospital	Chong-Jin Kim
13	Pusan National University Hospital	Kwang Soo Cha
14	Seoul National University Bundang Hospital	Chang-Hwan Yoon
15	Seoul National University Hospital	Hyo-Soo Kim
16	Samsung Medical Center	Hyeon-Cheol Gwon
17	Suncheon St. Garolo Hospital	Jang Hyun Cho
18	Yeungnam University Hospital	Jong-Seon Park
19	Wonkwang University Hospital	Seok Kyu Oh
20	Wonju Severance Christian Hospital	Junghan Yoon

21	Daejeon Eulji University Hospital	Kyu-Sun Lee
22	Chonbuk National University Hospital	Jei Keon Chae
23	Prebyterian Medical Center	Jay-Young Rhew
24	Jeju National University Hospital	Seung-Jae Joo
25	Cheongju St. Mary's Hospital	Yong-Mo Yang
26	Chungnam National University Hospital	In-Whan Seong
27	Chungbuk National University Hospital	Kyung-Kuk Hwang
28	Seoul Boramae Hospital	Sang-Hyun Kim
29	Inje University Haeundae Paik Hospital	Doo-Il Kim
30	Samsung Changwon Hospital	Yong Hwan Park
31	Inje University Ilsan Paik Hospital	Sung Uk Kwon
32	Gachon University Gil Medical Center	Tae Hoon Ahn
33	St. Paul's Hospital	Dong-Bin Kim
34	Kangwon National University Hospital	Byung Ryul Cho
35	Kwangju Christian Hospital	Seung-Uk Lee
36	Konyang University Hospital	Jang Ho Bae
37	Korea University Ansan Hospital	Sang Yup Lim
38	Daegu Catholic University Medical Center	Kee Sik Kim
39	Dong-A University Hospital	Moo Hyun Kim
40	Soonchunhyang University Cheonan Hospital	Sang-Ho Park
41	Ajou University Hospital	Seung Je Tak
42	Inha University Hospital	Sung-Il Woo
43	Inje University Sanggye Paik Hospital	Byung Ok Kim

**Table 3 of the supplementary data**

Medication use

	At discharge		After 1 year	
	OCT-guided (n = 535)	IVUS-guided (n = 4725)	OCT-guided (n = 535)	IVUS-guided (n = 4725)
<b>DAPT</b>	527 (98.5)	4633 (98.1)	418 (78.1)	3732 (79.0)
<b>Antiplatelet agent</b>				
<i>Aspirin</i>	531 (99.3)	4659 (98.6)	477 (89.2)	4068 (86.1)
<i>P2Y<sub>12</sub> inhibitor</i>	531 (99.3)	4671 (98.9)	440 (82.2)	3926 (83.1)
Clopidogrel	238 (44.5)	2290 (48.5)	253 (47.3)	2124 (45.0)
Ticagrelor	218 (40.7)	1,999 (42.3)	138 (25.8)	1,530 (32.4)
Prasugrel	75 (14.0)	382 (8.1)	54 (10.1)	327 (6.9)
<b>Anticoagulant agent</b>	12 (2.2)	129 (2.7)	14 (2.6)	104 (2.2)
<b>Triple therapy</b>	12 (2.2)	117 (2.5)	10 (1.9)	76 (1.6)
<b>Beta-blocker</b>	457 (85.4)	3776 (79.9)	409 (76.4)	3347 (70.8)
<b>RAS inhibitor</b>	401 (75.0)	3545 (75.0)	364 (68.0)	3142 (66.5)
<b>Statin</b>	519 (97.0)	4552 (96.3)	469 (87.7)	3954 (83.7)

DAPT, dual antiplatelet therapy; IVUS, intravascular ultrasound; OCT, optical coherence tomography;

RAS, renin-angiotensin system.

Data are presented as No. (%).

**Table 4 of the supplementary data**

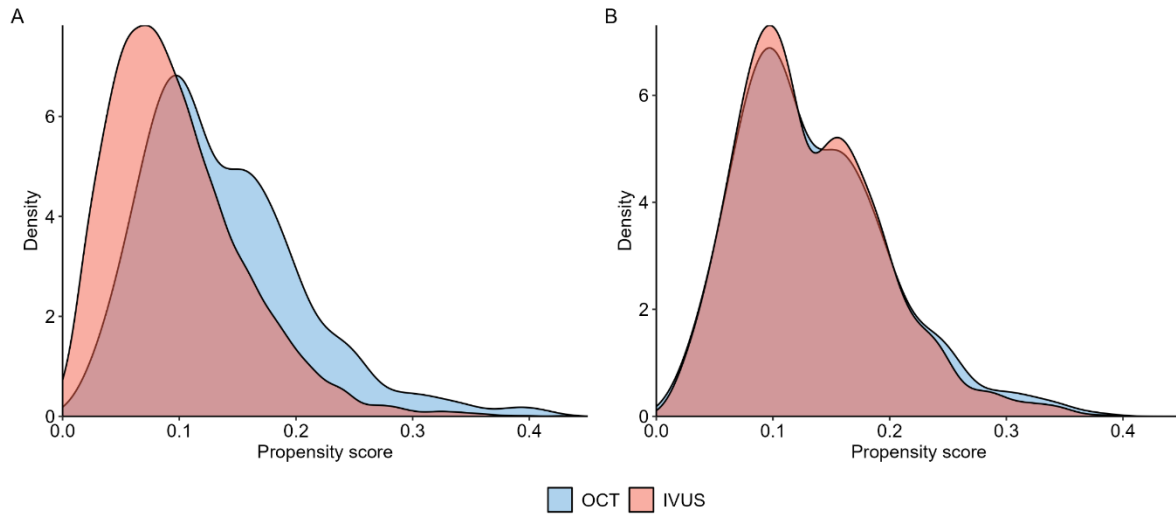
Incidence of acute kidney injury according to renal function

eGFR, mL/min/1.73m <sup>2</sup>	OCT-guided PCI (n = 532)	IVUS-guided PCI (n = 4715)
≥ 90	0/478	5/3817
60-89	0/38	3/519
45-59	0/8	6/198
30- 44	0/3	7/86
≤ 15	0/5	5/95

eGFR, estimated glomerular filtration rate; IVUS, intravascular ultrasound; OCT, optical coherence tomography; PCI, percutaneous coronary intervention.

**Figure 1 of the supplementary data.**

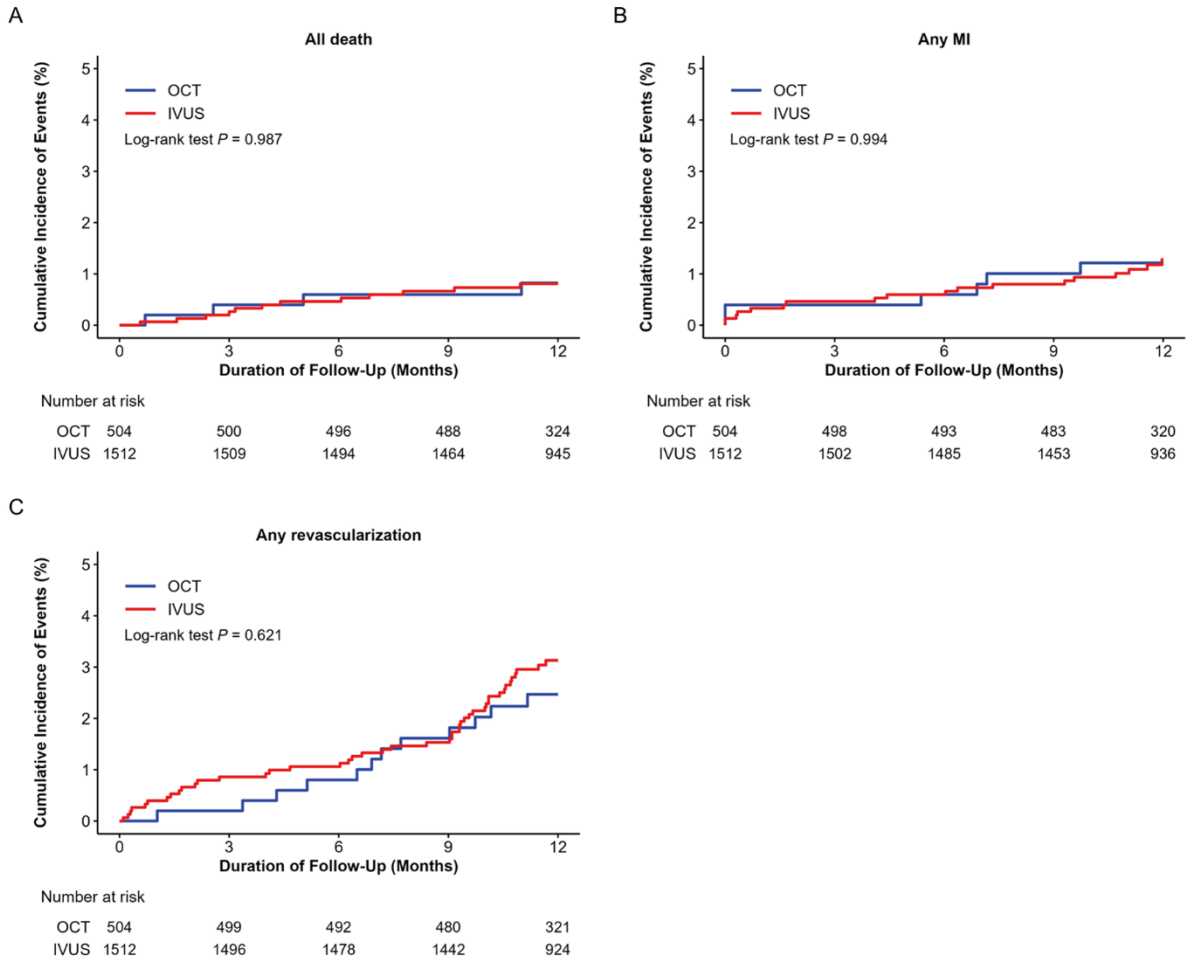
Propensity score distribution



IVUS, intravascular ultrasound; OCT, optical coherence tomography.

**Figure 2 of the supplementary data**

Kaplan-Meier curves for 1-year all-cause death, all MI, and any revascularization



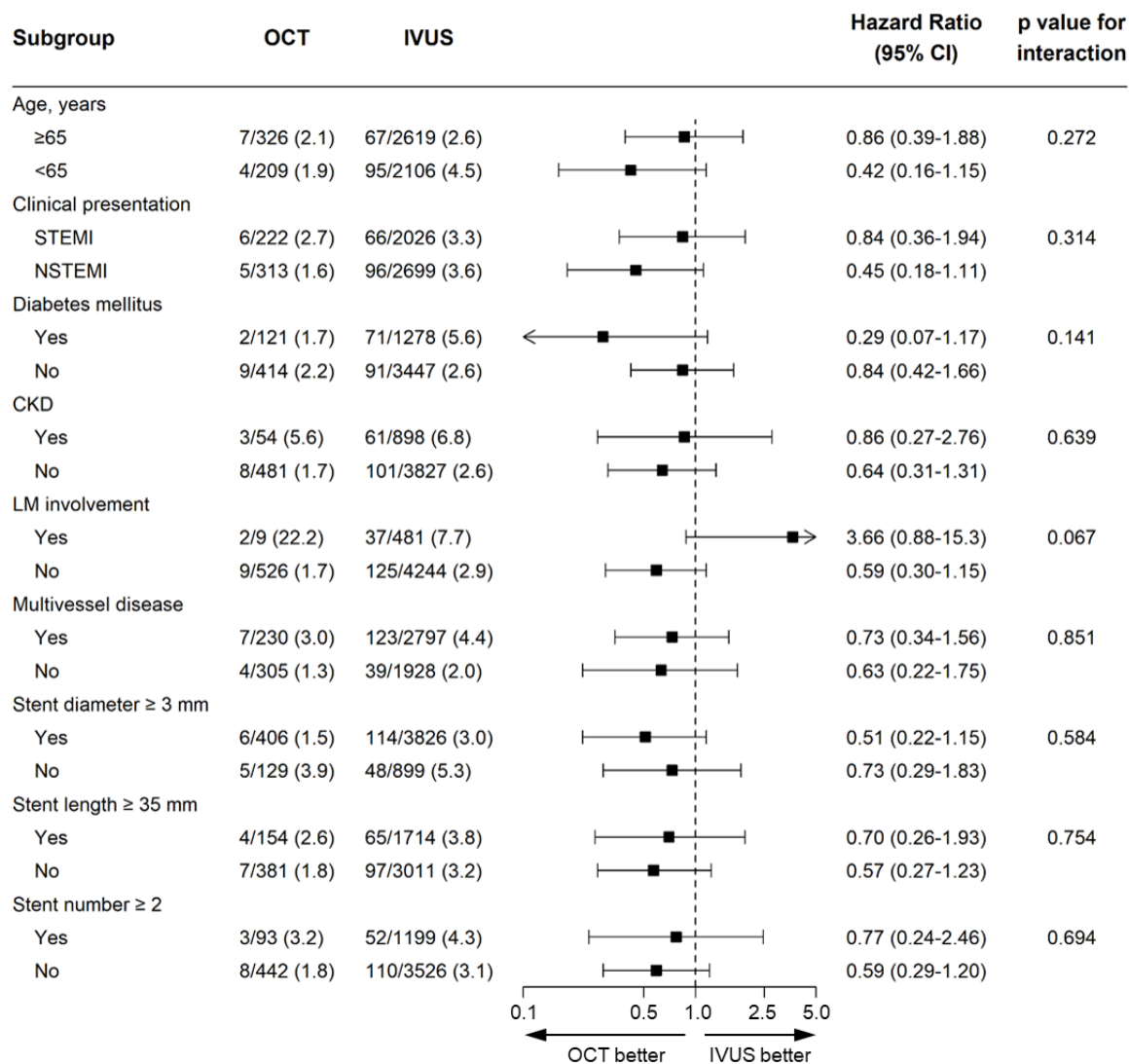
All-cause death (A), Any MI (B), Any revascularization (C)

IVUS, intravascular ultrasound; MI, myocardial infarction; OCT, optical coherence tomography.



Figure 3 of the supplementary data

Subgroup analysis for 1-year target lesion failure.



CKD, chronic kidney disease; IVUS, intravascular ultrasound; LM, left main artery; NSTEMI, non-ST-segment elevation myocardial infarction; OCT, optical coherence tomography; STEMI, ST-segment elevation myocardial infarction.