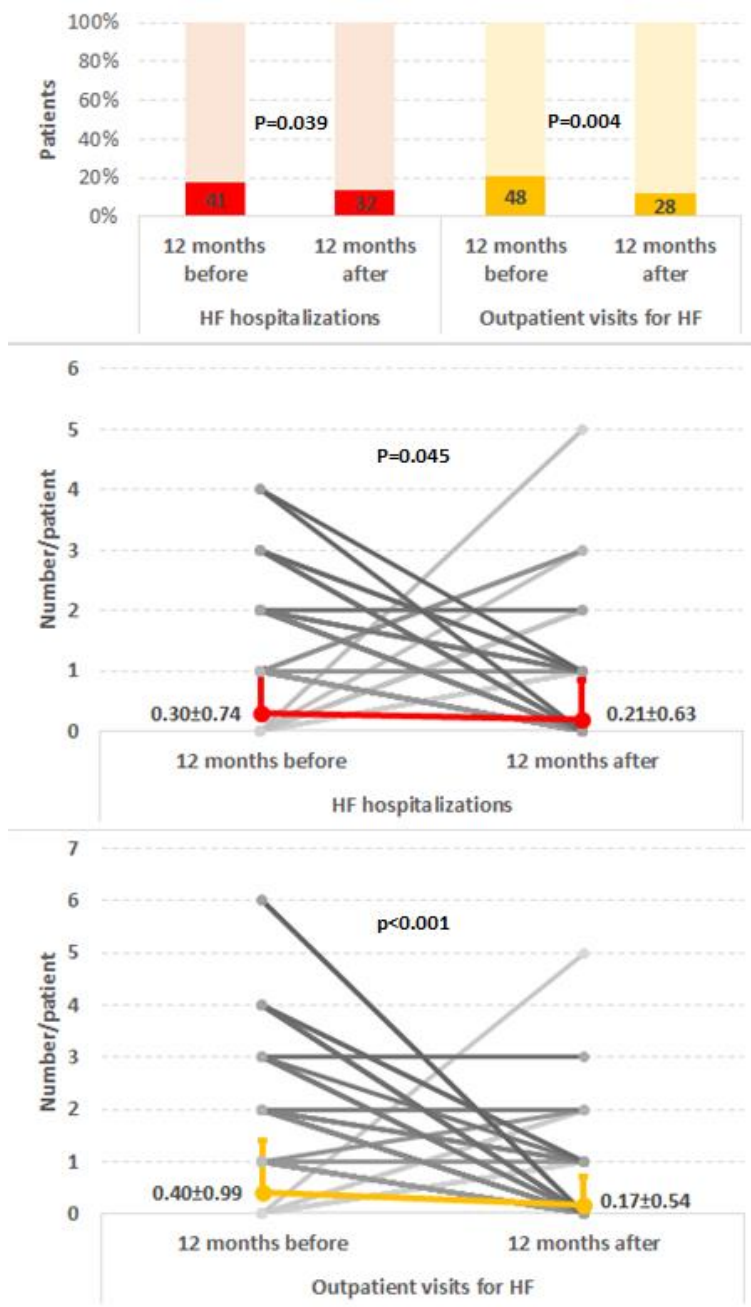


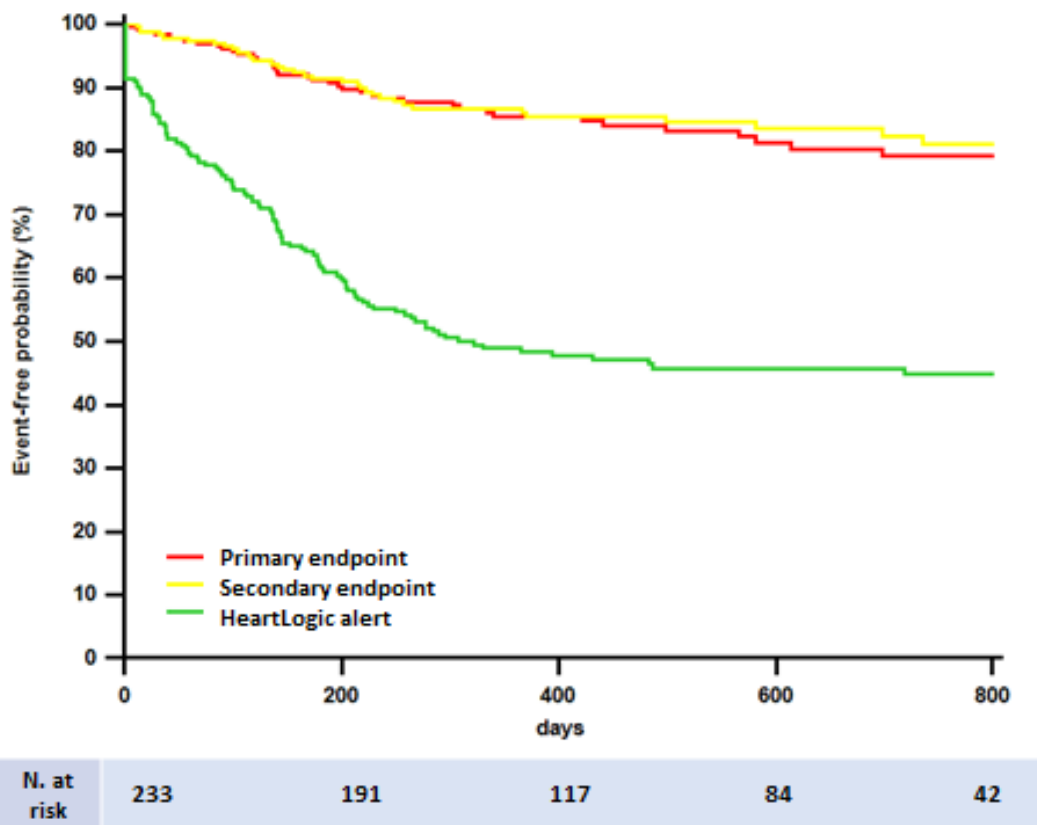
SUPPLEMENTARY DATA

Figure 1 of the supplementary data. Analysis of patients with ICD and with a CRT-D implanted for at least 12 months (n = 233). Number of HF events during the 12 months before and after the adoption of the RE-HEART management protocol.



HF, heart failure.

Figure 2 of the supplementary data. Analysis of patients with ICD and with a CRT-D implanted for at least 12 months (n = 233). Kaplan-Meier estimates of time from the adoption of the RE-HEART management protocol to first primary endpoint (hospitalization with a primary or secondary diagnosis of HF requiring at least 1 overnight stay, unscheduled visit involving intravenous treatment, or death), or secondary endpoint (HF decompensation requiring adjustment of oral HF therapy in an outpatient setting), HeartLogic alert.



HF, heart failure.